

Condensing unit  
Voltage Code : FZ

# CAJN4476YHR-FZ

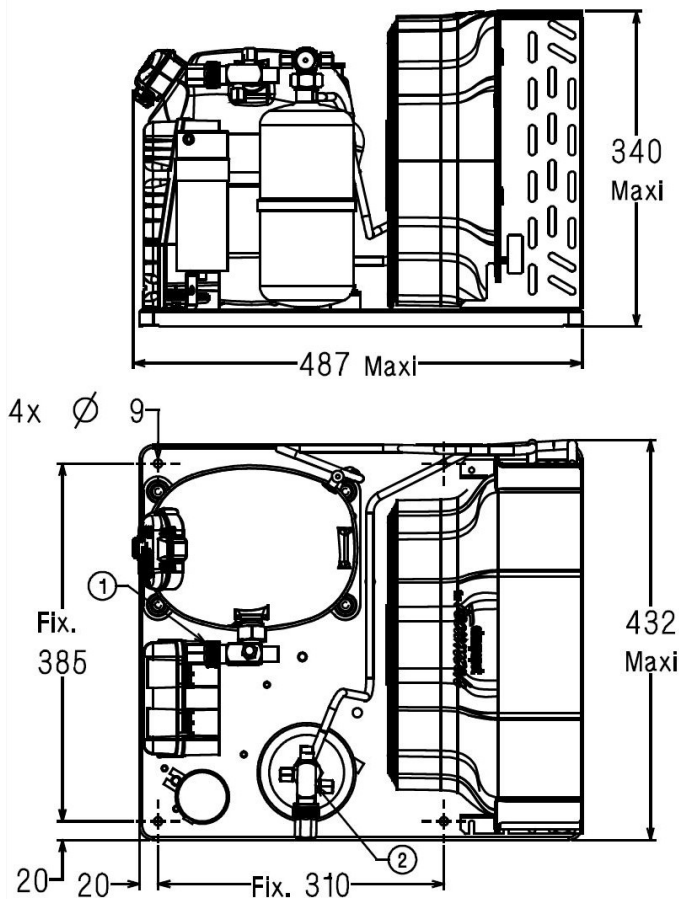
High Temp. Commercial (HP)

220 - 240V 1~ 50 Hz

R134a

## CAJN4476YHR-FZ

Conditions	Frequency	Nominal Cooling Capacity		Sound Power ISO3745 / ISO 3743-1
		Watts	BTU/h	
EN13215 / R134a	50 Hz	982	3349	62 dBA



<b>Net Weight (Kg)</b>	29.0
<b>Expansion device</b>	Expansion_Valve
<b>Air Flow (m³/h)</b>	900
<b>Compo Data Sheet</b>	214GS-FZ
<b>Elec Comp Type</b>	CSIR
<b>Current (Amp)</b>	
Load Rated Amp	4.9
Max Cont Current	7.1
Lock Rotor Amp	23
<b>Fan</b>	
Speed (rpm)	1200
Power (W)	30.0
Diameter (mm)	300
Protection	Overload
IP Level	IP54
<b>Condenser</b>	300/3900
<b>Liquid Receiver</b>	
Capacity (L)	1.5
Maximum Pressure (Bars)	32.0
<b>Suction Line</b>	
Suction Type	Vanne Orientable
For Tubing Out Diam	12.7 (1/2")
Suction Connection Type	Brased
<b>Liquid Line</b>	
Liquid Line Type	Vanne Orientable
For Tubing Out Diam	9.5 (3/8")
Liquid Connecton Type	Brased
<b>Connection Type</b>	VR
<b>Fan Guard</b>	maille < à 8mm

\* EN13215 : T°Ambient 32.0°C / T°Evap. -10.0°C / T°Return gas temp.. 20.0°C  
T°Subcooling. 3.0K


Note : Tecumseh reserves the right to change information contained in this document without notification.



**Tecumseh**

<b>CAJN4476YHR-FZ</b>	<b>Tension FZ : 220 - 240V 1~ 50 Hz</b>
-----------------------	---

Les performances sont données dans les <b>conditions EN13215</b> :	Gaz aspirés :	20.0 °C
Condition Dew	Sous refroidissement :	3.0 K
The performance data are in <b>EN13215 conditions</b> :	Return gas :	20.0 °C
Dew Condition	Subcooling :	3.0 K

<b>50 Hz R134a</b>											
											
										<b>N°5037</b>	
5   T ambience	6   T évaporation	(°C)	<b>-25</b>	<b>-20</b>	<b>-15</b>	<b>-10</b>	<b>-5</b>	<b>0</b>	<b>5</b>	<b>10</b>	<b>15</b>
<b>25</b>	1   P frigorifique	(Watt)	485	664	870	1106	1371	1664	1983	2325	2688
	2   P absorbée	(W)	411	465	518	571	628	689	758	837	928
	3   I absorbée	(A)	3.93	4.02	4.14	4.27	4.44	4.64	4.89	5.17	5.51
	4   Tc	(°C)	29.8	31.4	33.1	35.1	37.4	39.8	42.6	45.5	48.7
<b>32</b>	1   P frigorifique	(Watt)	397	568	762	982	1227	1497	1790	2104	2435
	2   P absorbée	(W)	399	463	525	587	652	722	799	887	987
	3   I absorbée	(A)	3.81	3.95	4.11	4.29	4.50	4.74	5.02	5.34	5.71
	4   Tc	(°C)	36.5	37.9	39.5	41.4	43.5	45.8	48.4	51.3	54.3
<b>43</b>	1   P frigorifique	(Watt)			585	780	995	1229	1481	1750	
	2   P absorbée	(W)			518	598	680	766	860	963	
	3   I absorbée	(A)			4.06	4.31	4.58	4.89	5.23	5.61	
	4   Tc	(°C)			49.6	51.2	53.1	55.3	57.7	60.3	

© 2019 Tecumseh Products Company  
All rights reserved

1 = cooling capacity 2 = power input 3 = current 4 = condensing temperature 5 = ambient temperature 6 = evaporating temperature

**Nota : Tecumseh se réserve le droit de modifier les informations contenues dans ce document sans préavis.**

**Note : Tecumseh reserves the right to change information contained in this document without notification.**