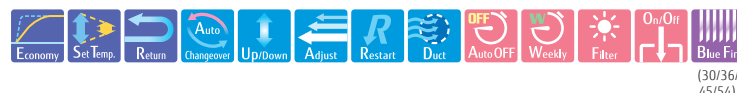
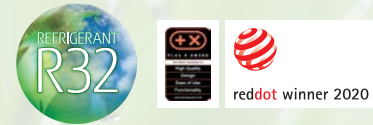


Ceiling



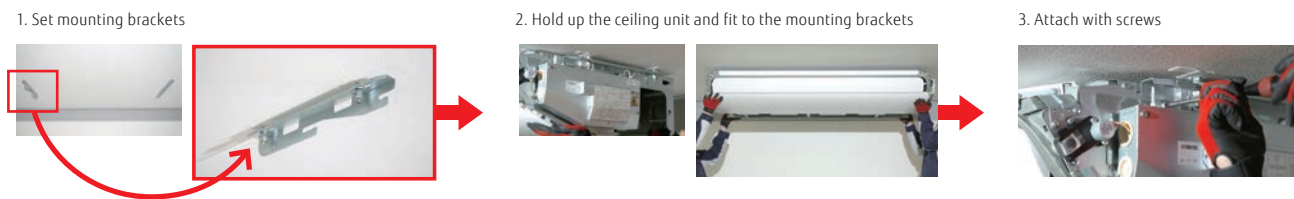
Light elegant design

The light-elegant, gently curved surface gives a sense of comfort and well-being.



Easy installation

The indoor unit can be easily installed under the ceiling thanks to the uniquely designed mounting kit.



Easy maintenance

The front panel can be opened without removing it for safe & speedy maintenance.



The drain pan can be removed for cleaning.



Components in the control box can be easily accessed from the wide side opening.



Flexible installation

The drain hose and pipe can be contained in the casing and connected in the right, left, angled, or downward direction.



Link up with a variety of central control system (Option)

Centralized control including facilities and equipment in addition to air conditioning is possible by linking up with MODBUS, KNX interfaces.



Model: ABEG18KRTA / ABEG22KRTA / ABEG24KRTA / ABEG30KRTA / ABEG36KRTA / ABEG45KRTA / ABEG36KRTA [3-phase] / ABEG45KRTA [3-phase] / ABEG54KRTA [3-phase]



Specifications

Model name	Indoor unit		ABEG18KRTA			ABEG22KRTA			ABEG24KRTA			ABEG30KRTA			ABEG36KRTA			ABEG45KRTA		
	Outdoor unit		ADEG18KBTB	ADEG22KBTB	ADEG24KBTB	ADEG30KBTB	ADEG36KBTB	ADEG45KBTB	ADEG36KRTA	ADEG45KRTA	ADEG54KRTA	ADEG36KRTA	ADEG45KRTA	ADEG54KRTA						
Power Source	Single phase, ~230 V, 50 Hz											3-phase, ~400 V, 50 Hz								
Capacity	Cooling	Rated	5.2		6.0		6.8		8.5		9.5		12.1		9.5		12.1		13.4	
		Min.-Max.	0.9-5.9		0.9-6.7		0.9-8.0		2.8-10.0		2.8-11.2		4.0-13.5		2.8-11.2		4.0-13.5		4.5-14.5	
	Heating	Rated	6.0		7.0		7.5		10.0		10.8		13.5		10.8		13.5		15.5	
Input Power	Cooling/Heating	Min.-Max.	0.9-7.5		0.9-8.0		0.9-9.1		2.7-11.2		2.7-12.7		4.2-16.2		2.7-12.7		4.2-16.2		4.7-16.5	
		Rated	1.55/1.62		1.87/1.95		2.14/1.97		2.65/2.77		2.96/2.88		4.22/3.84		2.96/2.88		4.22/3.84		4.45/4.43	
	EER	3.35		3.21		3.18		3.21		3.21		2.87		3.21		2.87		3.01		
COP	Cooling	3.70		3.59		3.81		3.61		3.75		3.52		3.75		3.52		3.50		
	Heating	5.2/4.4		6.0/4.8		6.8/6.0		8.5/8.0		9.5/8.7		-		9.5/8.7		-		-		
Pdesign	Cooling/Heating (-10°C)	6.2		6.1		6.2		6.1		6.37		-		6.37		-		-		
	SEER	4.1		4.0		4.1		4.0		4.21		-		4.21		-		-		
SCOP	Heating (Average)	A++		A++		A++		A++		A++		-		A++		-		-		
	Energy Efficiency Class	A+		A+		A+		A+		A+		-		A+		-		-		
Max. Operating Current	Cooling/Heating	12.1/12.1		12.6/12.6		13.6/13.6		22.6/22.6		22.6/22.6		28.5/28.5		10.5/10.5		14.0/14.0		14.0/14.0		
	Annual Energy Consumption	293		344		384		486		524		-		524		-		-		
Moisture Removal	Cooling	1.501		1.677		2.042		2.796		2.904		-		2.904		-		-		
	Heating	2.0		2.5		2.2		3.0		2.6		4.5		2.6		4.5		5.0		
Sound Pressure Level	Indoor (Cooling)	H/M/L/Q	38/36/33/31		42/37/34/31		41/36/32/29		45/40/35/32		44/40/37/32		45/41/39/34		44/40/37/32		45/41/39/34		48/44/41/38	
	Indoor (Heating)	H/M/L/Q	38/36/33/31		42/37/34/31		41/36/32/29		45/40/35/32		44/40/37/32		45/41/39/34		44/40/37/32		45/41/39/34		48/44/41/38	
	Outdoor (Cooling/Heating)	High	50/50		51/51		53/54		53/55		55/55		57/57		55/55		57/57		57/59	
Sound Power Level	Indoor (Cooling/Heating)	High	53/53		57/57		56/56		60/60		59/59		60/60		59/59		60/60		63/63	
	Outdoor (Cooling/Heating)	High	62/62		63/63		65/66		68/69		70/70		71/71		70/70		71/71		73/73	
	Indoor/Outdoor (Cooling)	High	840/2,160		900/2,240		1,230/2,700		1,400/3,750		1,850/3,750		1,900/4,450		1,850/3,750		1,900/4,450		2,100/4,450	
Net Dimensions	Indoor	mm	235 × 1,080 × 705		235 × 1,080 × 705		235 × 1,390 × 705		235 × 1,390 × 705		235 × 1,700 × 705		235 × 1,700 × 705		235 × 1,700 × 705		235 × 1,700 × 705		235 × 1,700 × 705	
	Outdoor	mm	632 × 799 × 290		632 × 799 × 290		716 × 820 × 315		788 × 940 × 320		788 × 940 × 320		998 × 940 × 320		788 × 940 × 320		998 × 940 × 320		998 × 940 × 320	
Weight	Indoor	kg	24		24		31		31		38		38		38		38		38	
	Outdoor	kg	36		38		42		52		52		67		53		67		67	
Connection Pipe Diameter (Liquid/Gas)	mm	6.35/12.7		6.35/12.7		6.35/12.7		9.52/15.88		9.52/15.88		9.52/15.88		9.52/15.88		9.52/15.88		9.52/15.88		
	Drain Hose Diameter (I.D./O.D.)	25/32		25/32		25/32		25/32		25/32		25/32		25/32		25/32		25/32		
Max. Pipe Length (Pre-Charge)	m	30 (20)		30 (20)		30 (20)		50 (30)		50 (30)		50 (30)		50 (30)		50 (30)		50 (30)		
	Max. Height Difference	20		25		25		30		30		30		30		30		30		
Operating Range	Cooling	-15 to 46		-15 to 46		-15 to 46		-15 to 46		-15 to 46		-15 to 46		-15 to 46		-15 to 46		-15 to 46		
	Heating	-15 to 24		-15 to 24		-15 to 24		-15 to 24		-15 to 24		-15 to 24		-15 to 24		-15 to 24		-15 to 24		
Refrigerant	Type (Global Warming Potential)	R32 (675)		R32 (675)		R32 (675)		R32 (675)		R32 (675)		R32 (675)		R32 (675)		R32 (675)		R32 (675)		
	Charge	1.02 (0.689)		1.25 (0.844)		1.25 (0.844)		1.90 (1.283)		1.90 (1.283)		2.70 (1.823)		1.90 (1.283)		2.70 (1.823)		2.70 (1.823)		

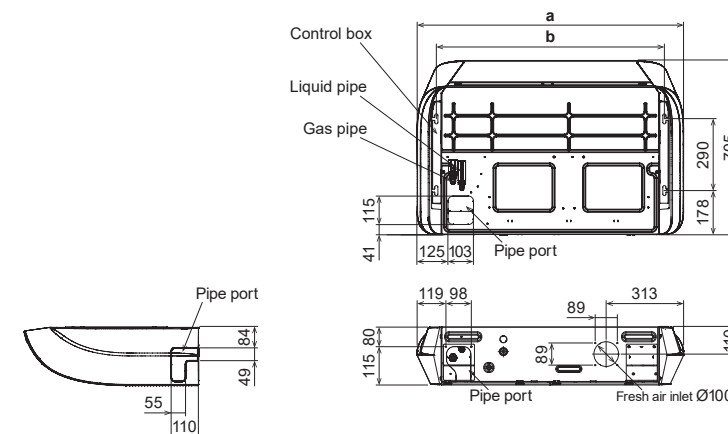
Optional parts

* For optional parts compatibility of Intesis devices, please refer to the optional parts compatibility list page C-050 to C-053 and C-066.

Wired Remote Controller (Design type):	UTY-RVRY	WLAN adapter:	UTY-TFSXZ1	Network Converter for single split (DC power supply type):	UTY-VTGX
Compact wired remote controller:	UTY-RCRYZ1		UTY-TFSXJ3	Network Converter for single split (AC power supply type):	UTY-VTGVX
Wired remote controller (touch panel):	UTY-RNRYZ5		FG-AC-WIF1Z1	External switch controller:	UTY-TERX
Wired remote controller:	UTY-RLRY	Drain pump unit:	UTR-DPB24T	External connect kit:	UTY-XWZXZG
Simple remote controller (without operation mode):	UTY-RHRY	IR receiver unit:	UTY-LBTYH	(Outdoor unit 30/36/45/54)	
Simple remote controller:	UTY-RSRY	L-type piping kit:	UTP-FX24A (18/22/24)	External connect kit:	UTY-XWZXZ3
External input and output PCB:	UTY-XCSX		UTP-FX35A (30/36/45/54)		
External input and output PCB box:	UTZ-GXEA	Communication kit:	UTY-TWRXZ3		

Dimensions

(Unit: mm)



	ABEG 18/22KRTA	ABEG 24/30KRTA	ABEG 36/45/54 KRTA
a	1,080	1,390	1,700
b	923	1,233	1,543

Medium Static Pressure Duct (High-Efficiency & Comfort)



Table with 7 columns for indoor units (ARXH12KMTAP to ARXH24KMTAP) and 7 columns for outdoor units (AOEG12KATA to AOEG24KATA). Rows include Capacity, Input Power, EER, COP, Pdesign, SEER, SCOP, Energy Efficiency Class, Max. Operating Current, Annual Energy Consumption, Moisture Removal, Sound Pressure Level, Sound Power Level, Airflow Rate, Static pressure range, Net Dimensions, Weight, Connection Pipe Diameter, Drain Hose Diameter, Max. Pipe Length, Max. Height Difference, Operating Range, and Refrigerant.

Medium Static Pressure Duct (High-Efficiency & Comfort)



Table with 6 columns for indoor units (ARXH30KMTAP to ARXH5KMTAP) and 6 columns for outdoor units (AOEG30KATA to AOEG45KATA). Rows include Capacity, Input Power, EER, COP, Pdesign, SEER, SCOP, Energy Efficiency Class, Max. Operating Current, Annual Energy Consumption, Moisture Removal, Sound Pressure Level, Sound Power Level, Airflow Rate, Static pressure range, Net Dimensions, Weight, Connection Pipe Diameter, Drain Hose Diameter, Max. Pipe Length, Max. Height Difference, Operating Range, and Refrigerant.

Medium Static Pressure Duct (Standard)



Table with 7 columns for indoor units (ARXG22KMLB to ARXG45KMLA) and 7 columns for outdoor units (AOEG22KATA to AOEG45KQTA). Rows include Capacity, Input Power, EER, COP, Pdesign, SEER, SCOP, Energy Efficiency Class, Max. Operating Current, Annual Energy Consumption, Moisture Removal, Sound Pressure Level, Sound Power Level, Airflow Rate, Static pressure range, Net Dimensions, Weight, Connection Pipe Diameter, Drain Hose Diameter, Max. Pipe Length, Max. Height Difference, Operating Range, and Refrigerant.

Ceiling



Table with 6 columns for indoor units (ABEG18KRTA to ABEG45KRTA) and 6 columns for outdoor units (AOEG18KATA to AOEG45KQTA). Rows include Capacity, Input Power, EER, COP, Pdesign, SEER, SCOP, Energy Efficiency Class, Max. Operating Current, Annual Energy Consumption, Moisture Removal, Sound Pressure Level, Sound Power Level, Airflow Rate, Net Dimensions, Weight, Connection Pipe Diameter, Drain Hose Diameter, Max. Pipe Length, Max. Height Difference, Operating Range, and Refrigerant.

Feature Summary

Type	Cassette		Duct			Duct					Floor	Ceiling
Series	Compact 4-way Flow Series	Circular Flow Series	Slim (With drain pump)	Medium Static Pressure (High-Efficiency & Comfort)	Medium Static Pressure (Compact size)	Medium Static Pressure (Standard)	High Static Pressure		Big			
Model name	AUXG 09/12/14/18/22/24 KVLA	AUXG 18/22/24/30/36/45/54 KRLB	ARXG 09/12/14/18 KLLAP	ARXH 12/14/18/22/24/30/36/45/54 KMTAP	ARXG 12/14/18/22/24/30/36/45/54 KHTAP	ARXG22KMLB ARXG24/30/36/45KMLA	ARXG45/54KHTB	ARYG60LHTA	ARYG72/90LHTA	AGEG09/12/14KVCA	ABEG 18/22/24/30/36/45/54 KRTA	
Energy-Saving Features	Save Human sensor											
	Human sensor control		○									
	Economy operation	●	●	●	○	●	●	●	●	●	●	
	Setting temperature range limitation	○	●	○	○	●	○	○	○	●	●	
	Set temperature auto return	●	●	●	○	●	●	○	○	●	●	
Features for Comfort	Power diffuser											
	Powerful operation									●		
	10°C Heat	●	○	○	○	○	○	○	○	●	○	
	Outdoor unit low noise operation		○ (45/54)			○ (45/54)	○ (45) (36/LMLA)	○	○	●	○	
	Auto changeover	●	●	●	●	●	●	●	●	●	●	
	UP/DOWN swing louver	●	●	○						●	●	
	Double swing automatic											
	Automatic fan speed	●	●	●	●	●	●	●	●	●	●	
	Auto restart	●	●	●	●	●	●	●	●	●	●	
	Connectable fresh air duct		●		●	●	●				●	
	Fresh air intake	○	○	○	○	○	○	○	○	○	○	
	Connectable distributing duct		●				●					
	Individual airflow direction control		●									
Convenience Features	Auto-off timer	●	●	●	●	●	●	○	●	○	●	
	Sleep timer	●	○	○	○	○	○	○	○	●	○	
	Program timer	●	○	○	●	○	○	○	○	●	○	
	Weekly timer	●	●	●	○	●	●	●	●	●	●	
	Weekly & Temperature setback timer	○		●			●	●	●			
	Filter sign	●	●	●	●	●	●	●	●	●	●	
	External error output		○		●	○			○	○	○	
	External ON/OFF input	●	●	●	●	●	●	○	●	○	●	
	Wireless LAN control	○	○	○	○	○	○	○	○	○	○	
	Multi system control											
Clean Features	Special cooling											
	Ion deodorization filter									●		
	Apple-catechin filter									●		
	Long-life filter				○	○	○	○	○			
	Washable panel											
Installation Support	Silver Ion Filter	○	○	○	○	○	○	○	○	○		
	Automatic airflow adjustment				●	●			●			
	Drain pump as standard	●	●	●	●	●	○		○		○	
	Blue fin		● (30/36/45/54)		● (30/36/45/54)	● (30/36/45/54)	● (30/36/45)	●	●	●	● (30/36/45/54)	
	Refrigerant cycle monitor				○							

*1 For details of Multi System Control function, refer to C-013.

*2 Wired remote controller (UTY-RNRYZ5) is required to use Special Cooling function.

*3: It is only available on the AIRSTAGE Mobile application and wired remote controller. It can not be used via wireless remote controller.

○: Optional function